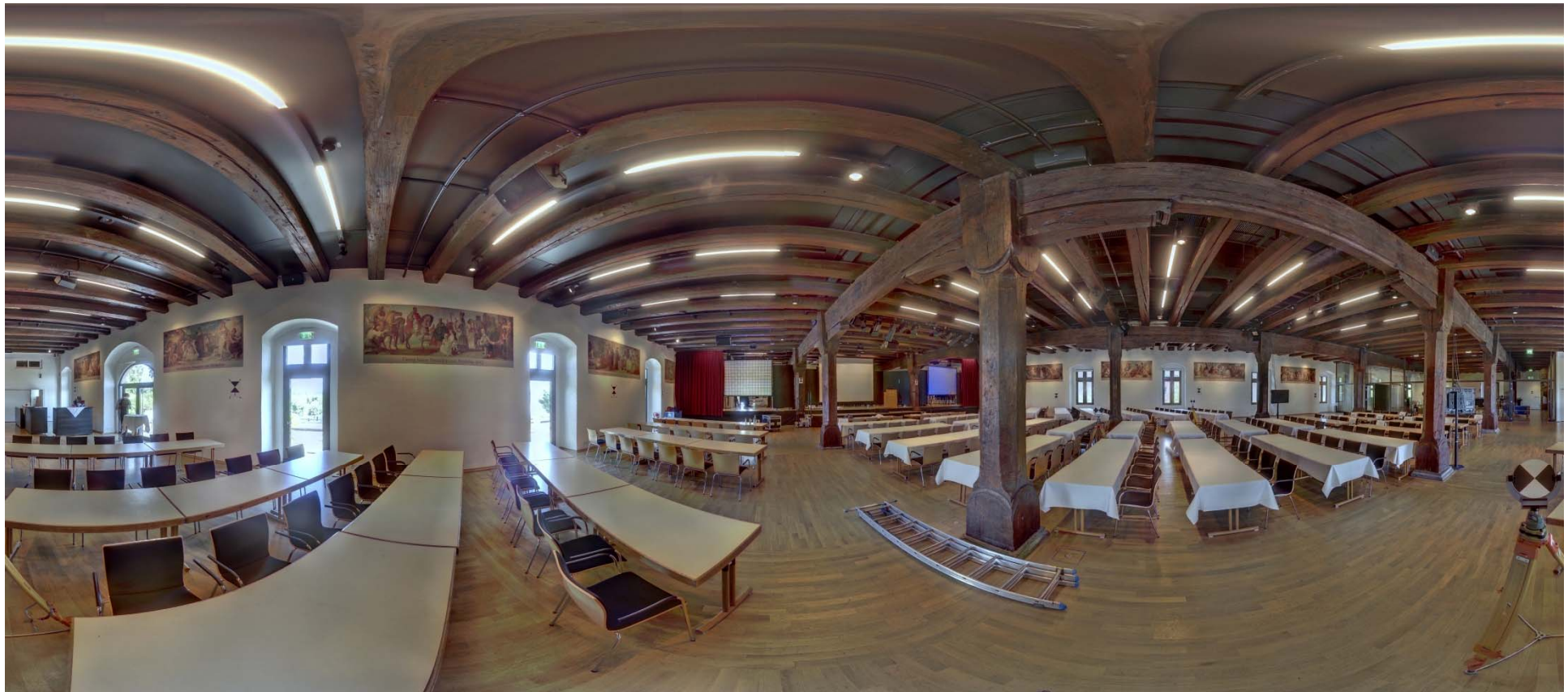


Laserscanning - applications -



Jelde Borgmann, Jörg Jungedeitering, Knut Riegel

Point-Cloud Visualisation



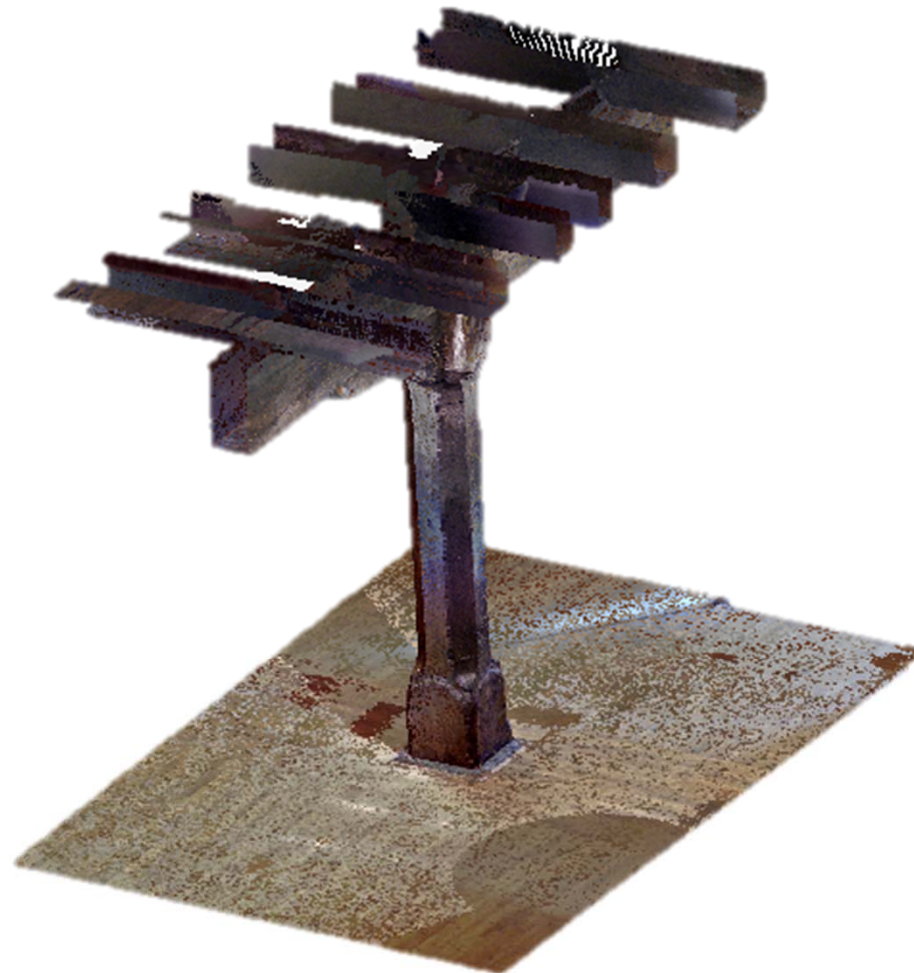
colourised Point-Cloud



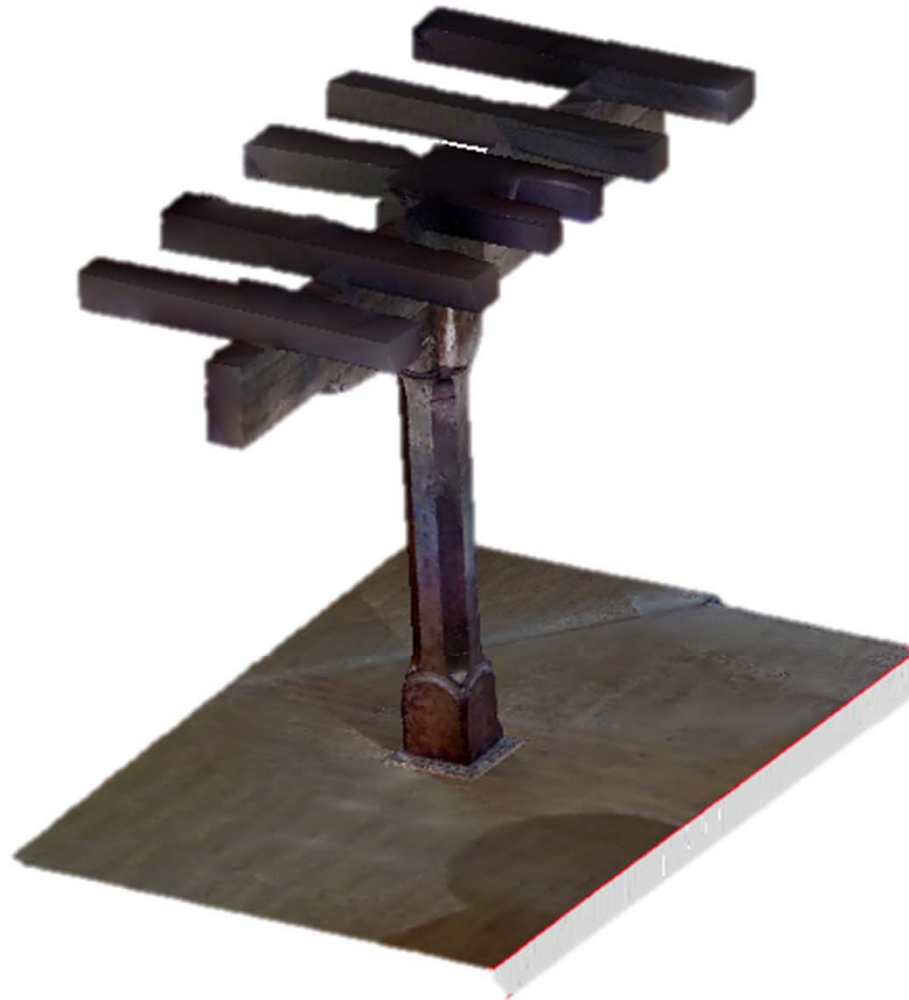
3d-Object visualisation



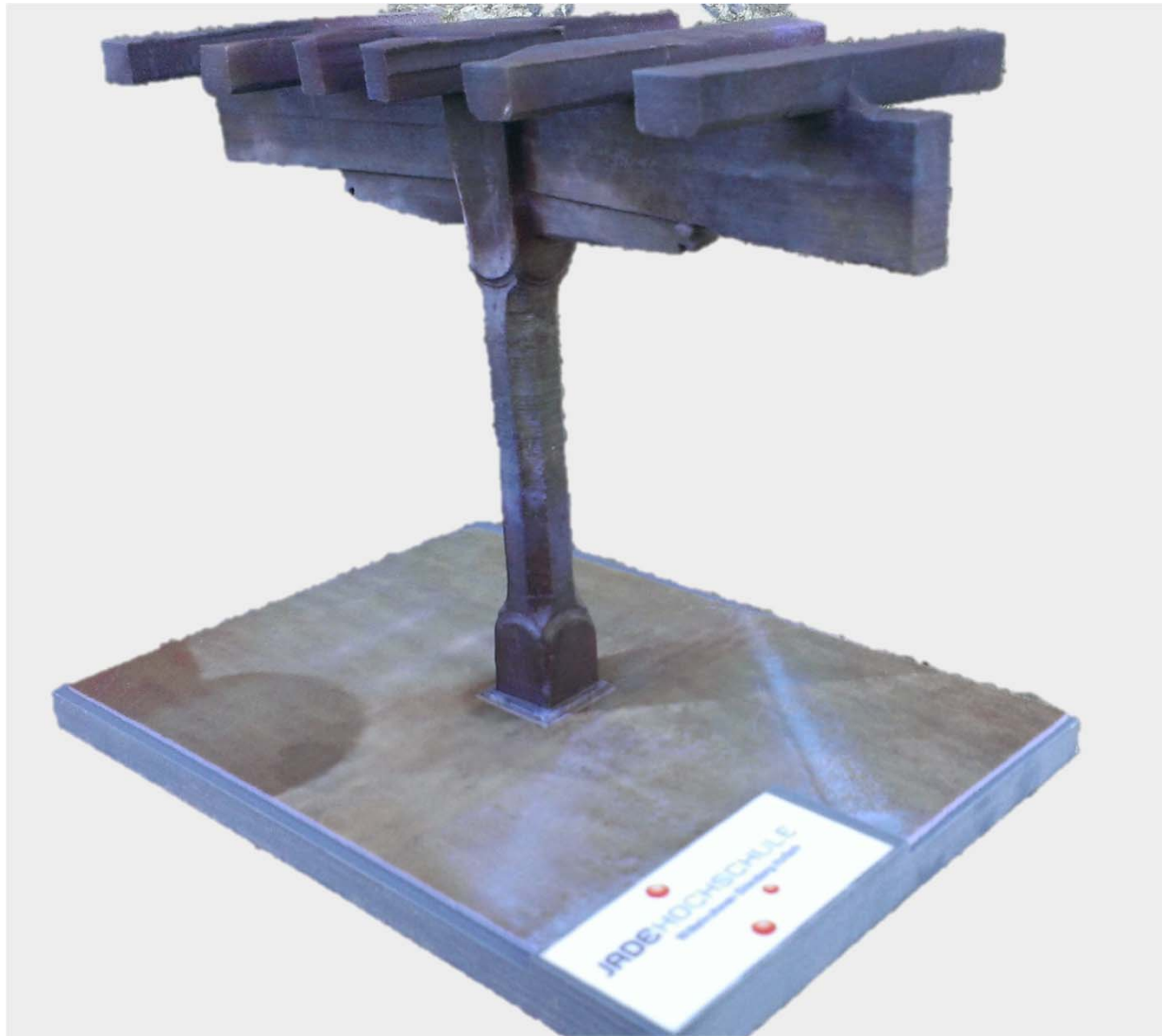
Point-Cloud of a column



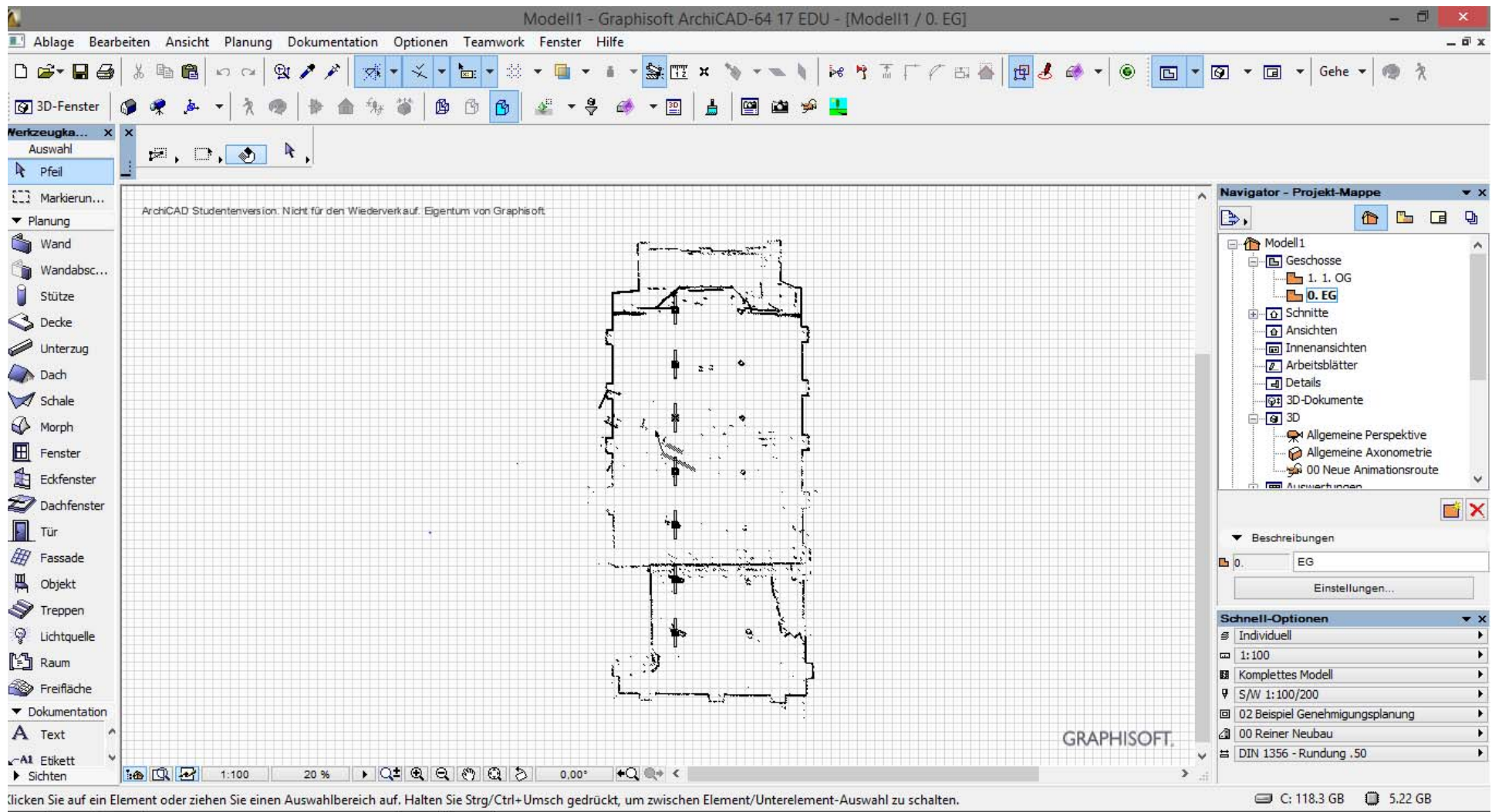
Volume model of a column



Rapid Prototyping Model



Import of reference sections to a CAD-Programm



The screenshot displays the ArchiCAD 64 17 EDU software interface. The main window shows a 2D floor plan with a section line drawn through it. A section view is visible on the right side of the plan. The interface includes a top menu bar with options like 'Ablage', 'Bearbeiten', 'Ansicht', 'Planung', 'Dokumentation', 'Optionen', 'Teamwork', 'Fenster', and 'Hilfe'. Below the menu is a toolbar with various icons for drawing and editing. On the left, there is a 'Werkzeugk...' (Tools) palette with categories like 'Auswahl', 'Markierun...', 'Planung', and 'Dokumentation'. On the right, there is a 'Navigator - Projekt-Mappe' (Navigator - Project Map) showing a tree view of the project structure, including 'Geschosse' (Floors), 'Schnitte' (Sections), and 'Ansichten' (Views). The status bar at the bottom shows the scale as 1:100 and 20% zoom. The Graphisoft logo is visible in the bottom right corner of the window.

ArchCAD Studentenversion. Nicht für den Wiederverkauf. Eigentum von Graphisoft

GRAPHISOFT.

1:100 20 % 0,00'

Clicken Sie auf ein Element oder ziehen Sie einen Auswahlbereich auf. Halten Sie Strg/Ctrl+Umsch gedrückt, um zwischen Element/Unterelement-Auswahl zu schalten.

C: 118.3 GB 5.22 GB

3d-Model visualisation



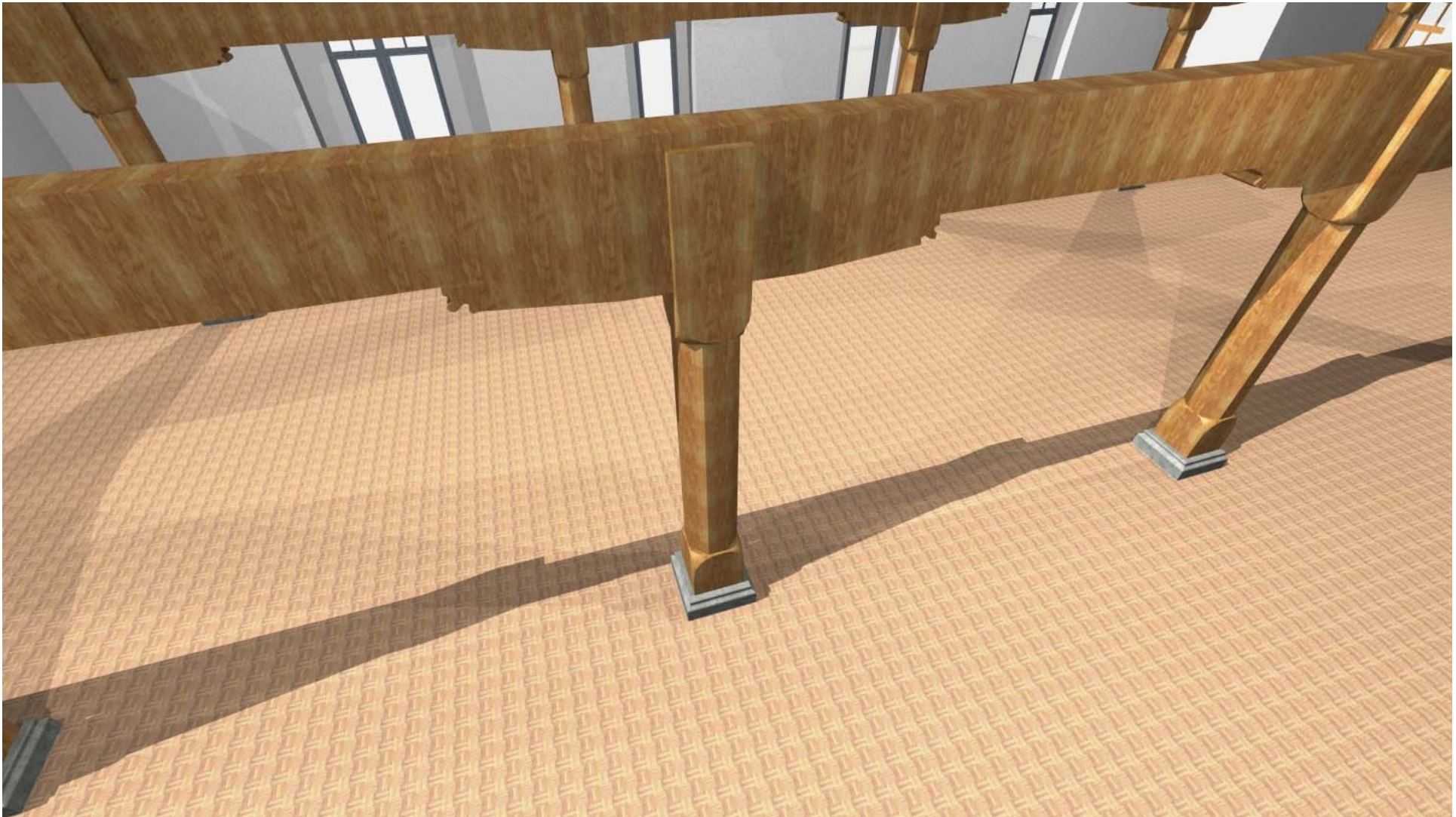
3d-Model visualisation



3d-Model visualisation



3d-Model visualisation



3d-Model visualisation

